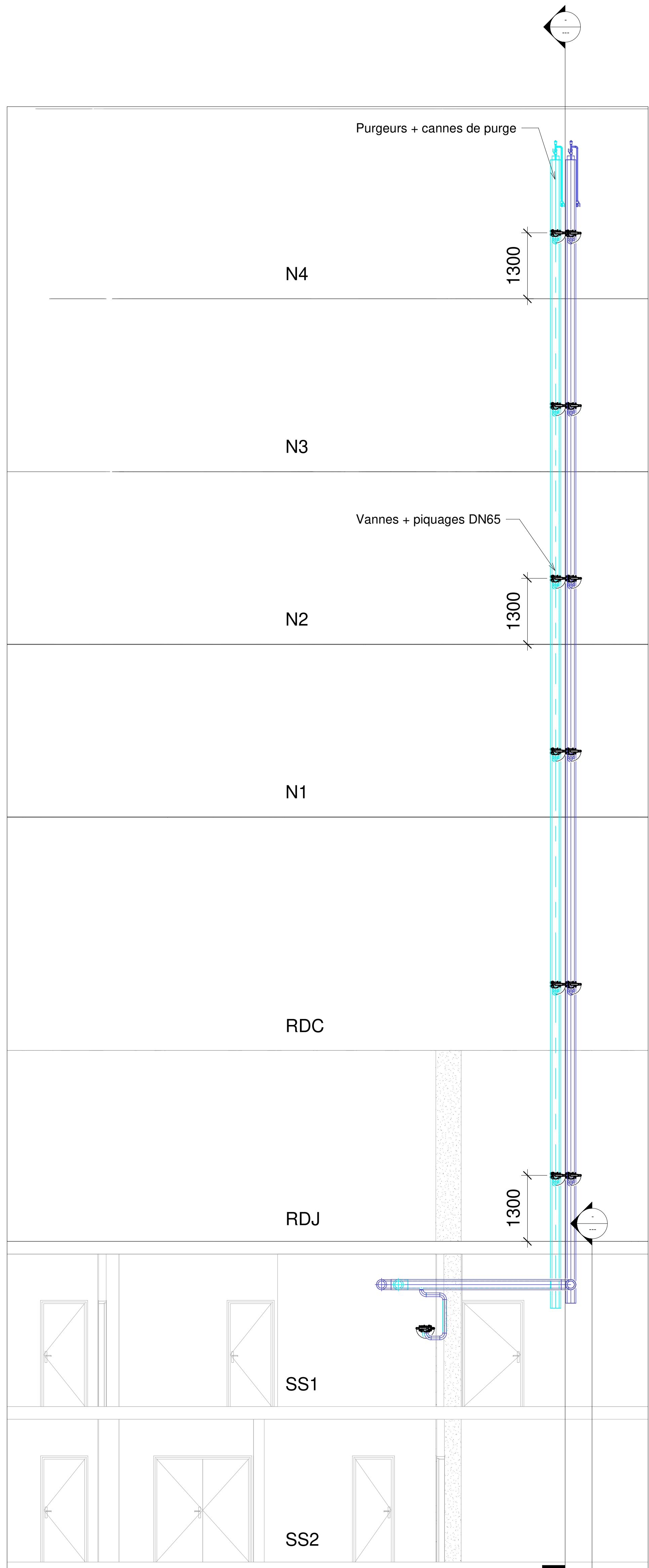
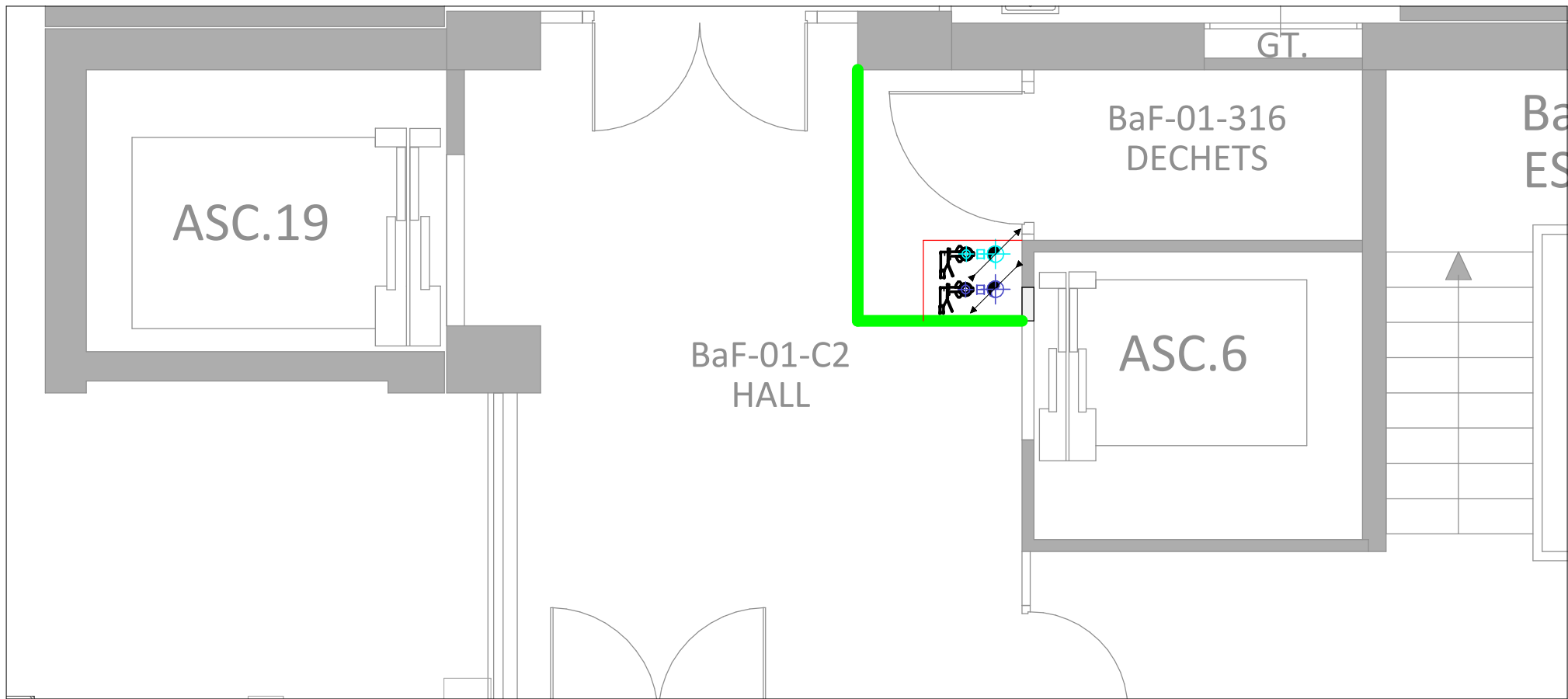


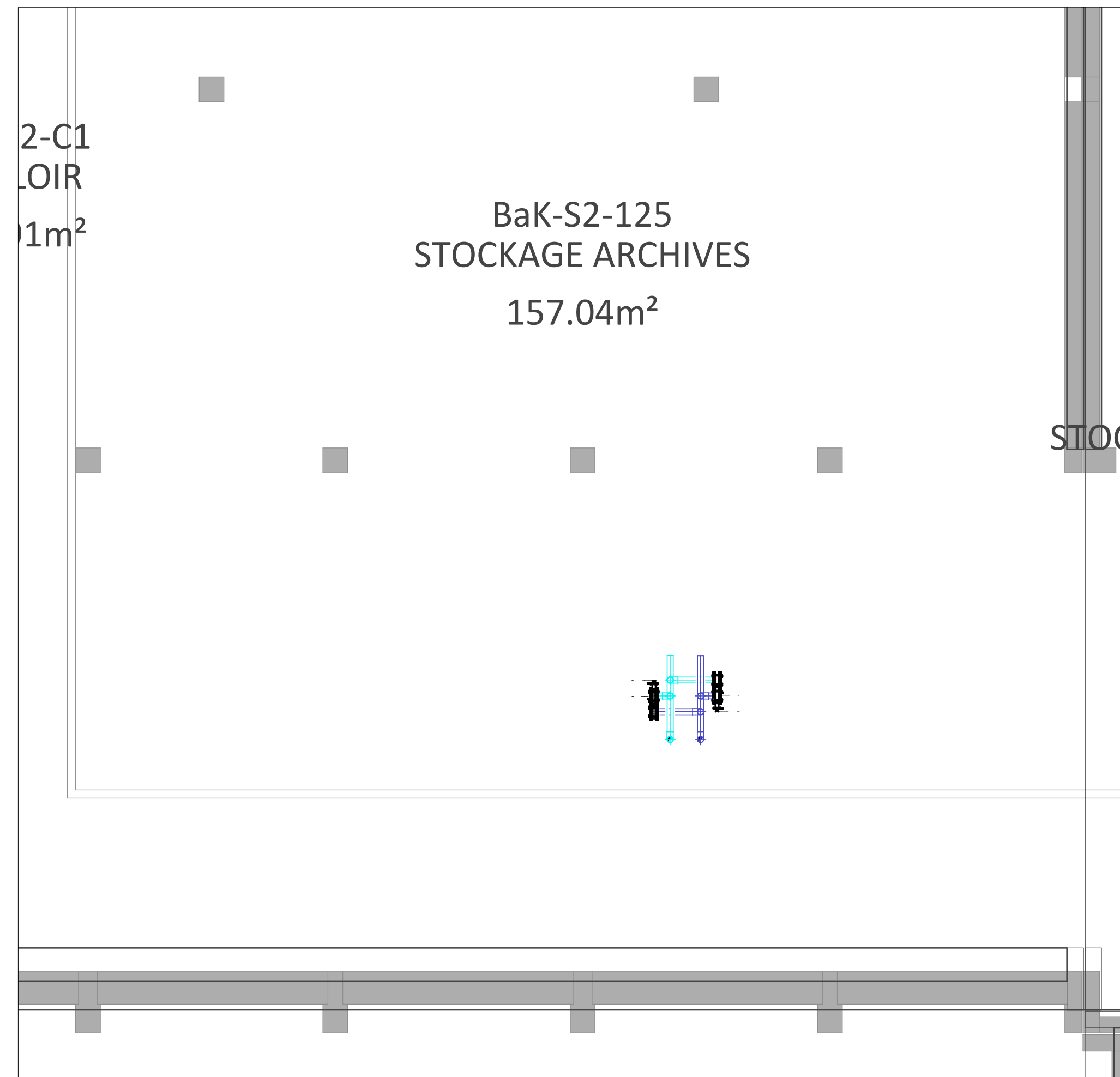
8 310_Niveau SS1_EFG
1 : 50



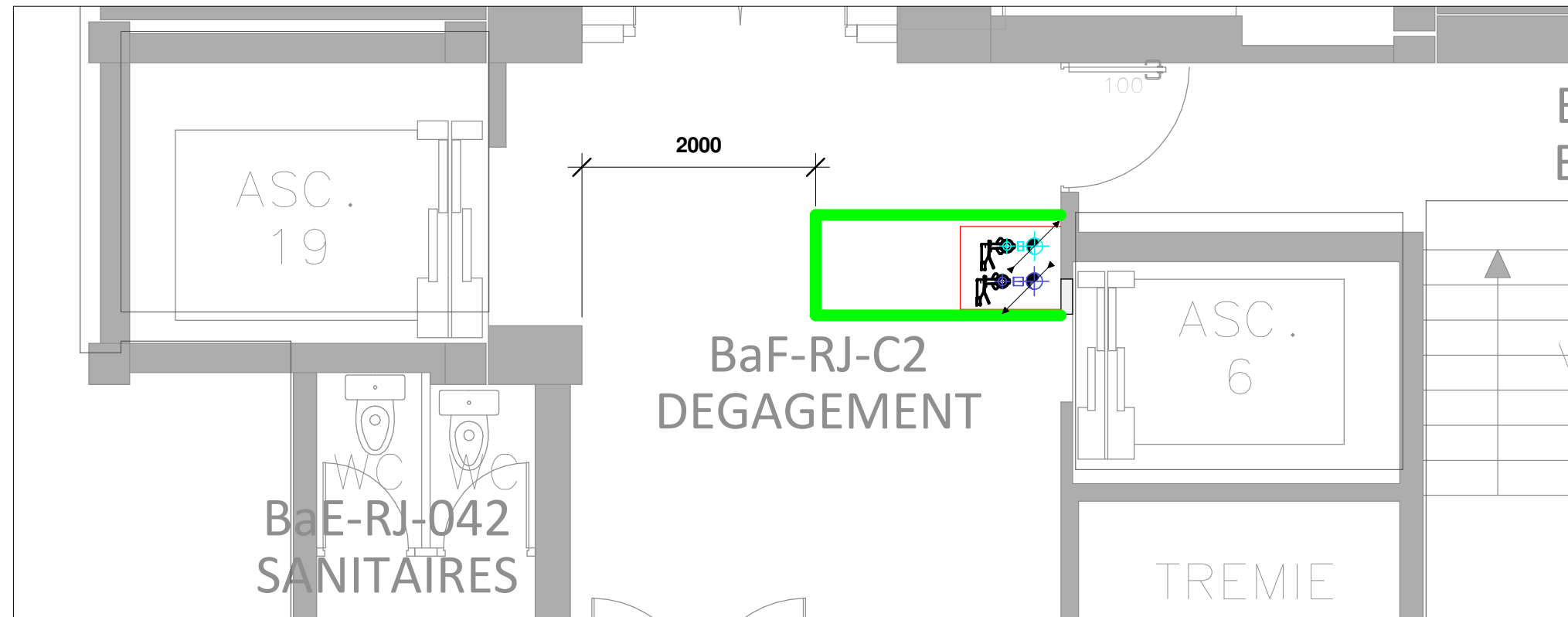
11 Coupe réseau ensemble colonne EFG
1 : 50



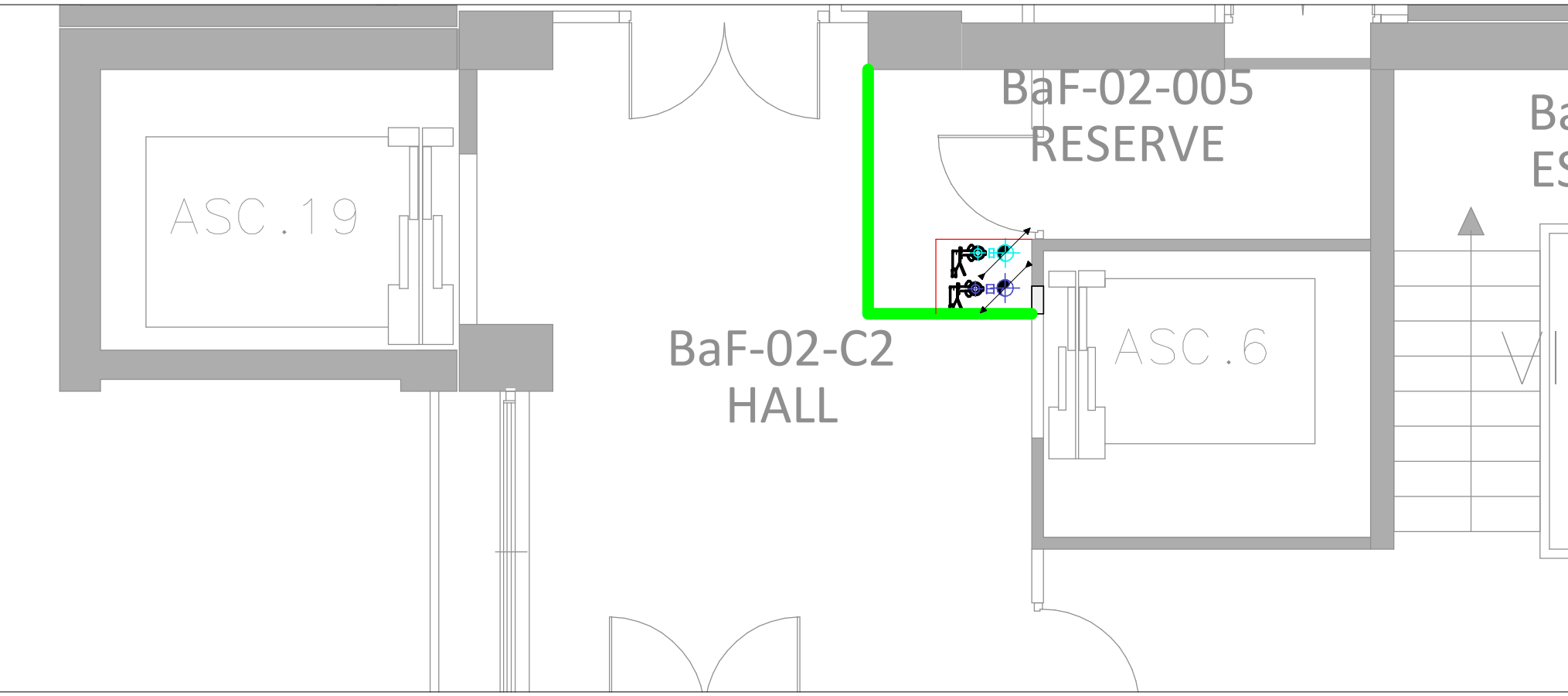
5 310_Niveau 1_EFG
1 : 50



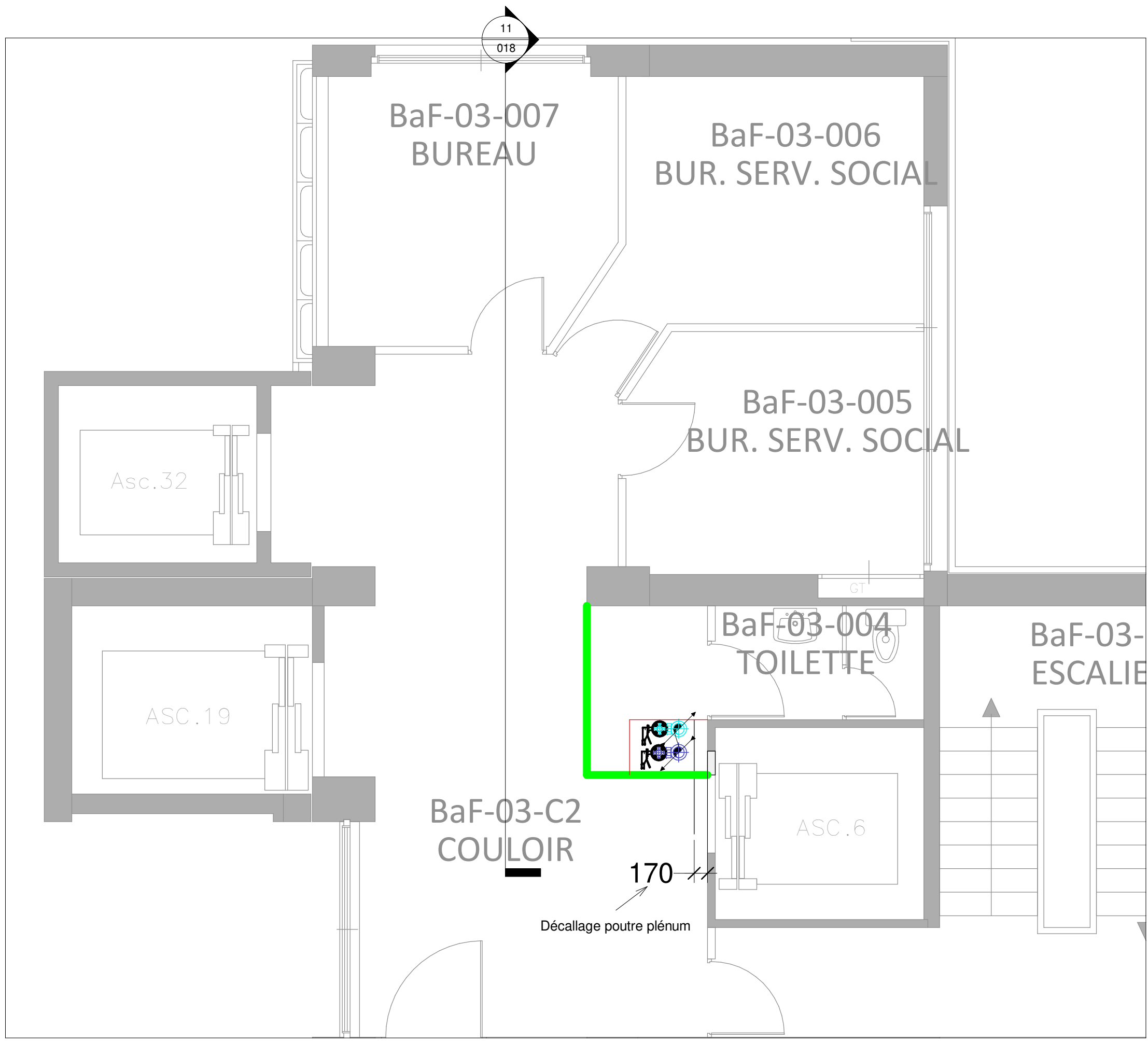
1 310_Niveau SS2_EFG
1 : 50



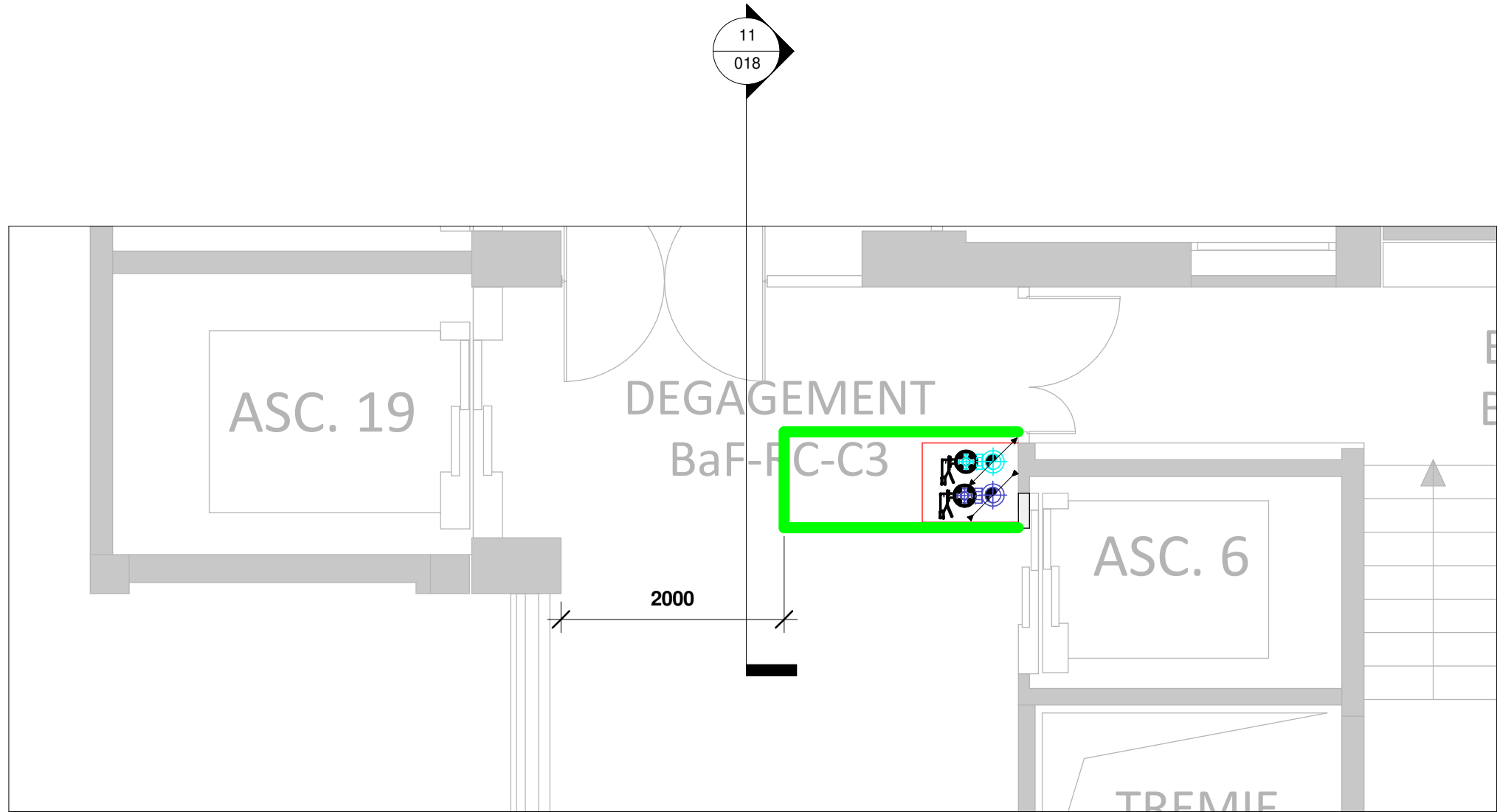
7 310_Niveau RDJ_EFG
1 : 50



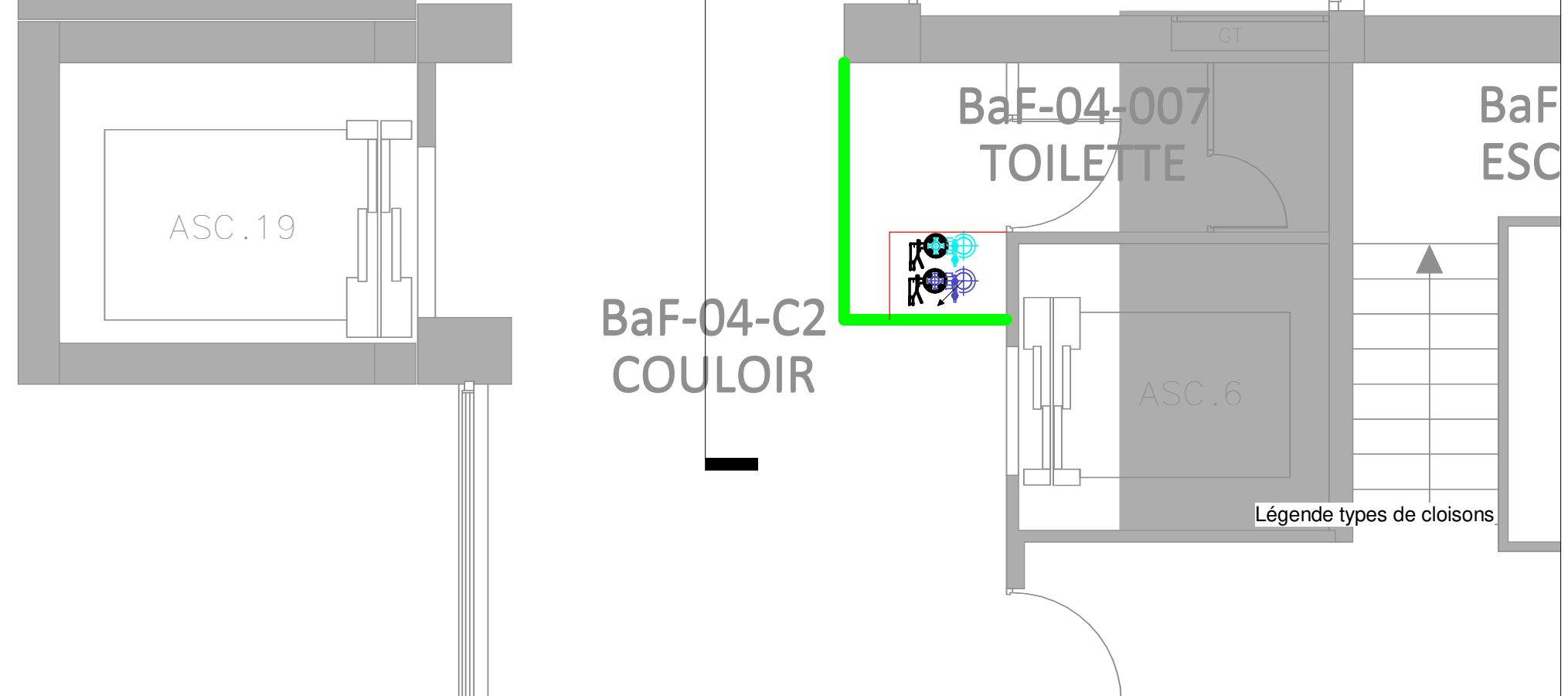
4 310_Niveau 2_EFG
1 : 50




3 310_Niveau 3_EFG
1 : 50



6 310_Niveau RDC_EFG
1 : 50



2 310_Niveau 4_EFG
1 : 50



DIRECTION GENERALE
3 Quai des celestins
69373 LYON CEDEX 08
04 72 40 72 40

DIRECTION DES AFFAIRES
TECHNIQUES
49 Rue Vilon - CS98297
69373 LYON CEDEX 08
04 72 11 70 54

ETABLISSEMENT

OPERATION
HOPITAL PIERRE WERTHEIMER
CREATION NOUVELLE PRODUCTION DE FROID

DOCUMENT
Colonne confort EFG

ENTREPRISE
CLÉVIA
CLÉVIA
Energie Climatique Solutions
120 000 m² de surface
17 400 m³ de volume
17 400 m³ de volume

Page	Version	Etat	Ref	Signature	Date	Par	Appr
HCL	CLE	DOE	04	TB	TZ	TN	PLA

MAITRE D'OEUVRE :
Auteur

DESSINATEUR :
Auteur

018

DATE : 17/04/24

ECHELLE : 1 : 50